



liquidelements™
artfully poured floors™





liquidelements, artfully poured floors, partners with the architectural and design community to support specifications and offer single source floor solutions. **liquidelements** is a brand of The Stonhard Group, providing more than 90 years experience as both manufacturer and installer of seamless floors.

liquidelements' floors combine the outstanding performance of seamless systems with dramatic designs for commercial interior spaces. Matte or gloss, swanky glitter and softly swirled metallics, to clean modern designs, **liquidelements'** floors are sought by designers and planners around the globe as an artistic, as well as smart choice for floor finishes in hotels, showrooms, casinos, restaurants and corporate offices.

Unrivaled styles with practical results – resilient, ergonomic, UV resistant, easy to maintain and sustainable.







Sapporo White	Hakui Orchid	Edinburgh Mist	Kilkenny Castle
West End Gray	Berlin Night	Halifax Rain	Brisbane Bisque
Auckland Moss	Londonderry Dew	Nairobi Brown	Belgian Waffle

SMOOTH // *refined, dynamic, understated*

This sleek, self-leveling floor offers depth and mood in a matte or gloss finish; performs in any contemporary commercial setting. Smooth is available in a spectrum of color choices, including the Duo Line with complementary or contrasting color blends. Despite its rich finish, Smooth is resilient, scratch-resistant, comfortable underfoot and easy to maintain.





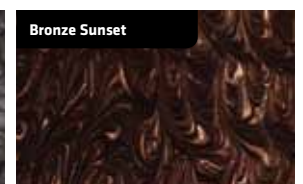
Copper Storm



Smoky Rain



Black Vortex



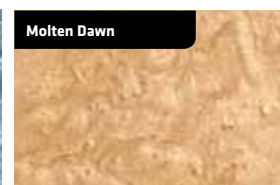
Bronze Sunset



Purple Haze



Lake Azure



Molten Dawn



Fusion Storm

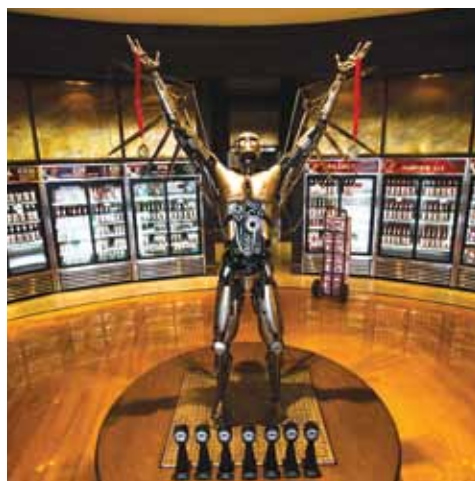
REFLECT // *regal, sophisticated, elegant*

Reflect's swirling, illuminated surface borrows its generous palette from the earth's metallic landscape. Reflect is offered in four finishes: Filigree, swirling and airy; Wave, rolling and wet in appearance; Hammered, vintage and antique; and Wind, tousled and carefree. All are resilient, comfortable under foot and easy to maintain.

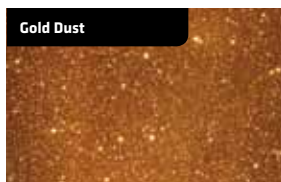
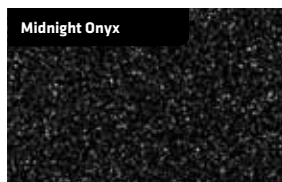


International Interior Design Association & Hospitality Design Award of Excellence Winner, 2012
in the category of Hard Surface Flooring

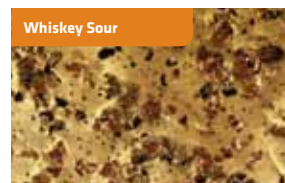
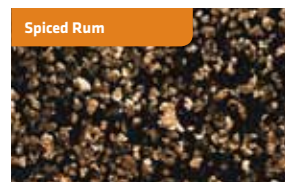
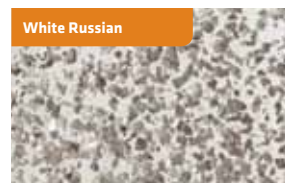
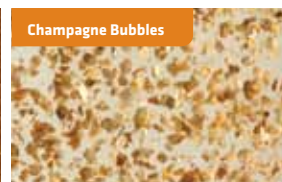
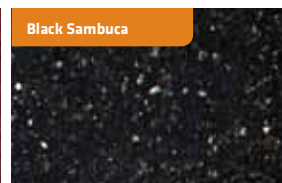




Glitter Collection



Mineral Collection



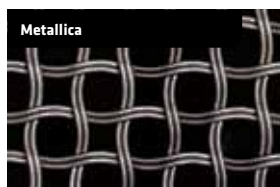
GLITZ // *flashy, intense, exciting*

This sparkling, glossy floor reveals color from every direction. The adventurous colors fused with natural metals evoke iconic drama; from the Vegas Strip to Haute Couture runways, this dazzling, resilient floor will ensure comfort under foot while remaining easy to clean and scratch resistant.





Seashells



Metallica

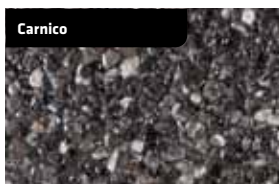
CAPTURE // *unique, versatile, complex*

A thoroughly unique, reflective surface that encourages individualism. Capture allows you to set the mood and theme by locking inanimate objects in a rich, thick resin. Encasing printed graphics and artwork gives designers complete personalization of the floor. While each Capture theme is different, the floor remains resilient, comfortable under foot and easy to maintain.

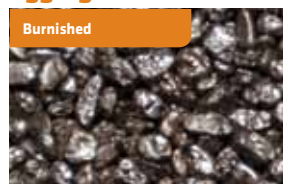




Marble Collection



Aggregate Collection



CRUSH // *bold, rich, organic*

Stone Age meets chic. Tumbled marble, color coated quartz aggregate and other natural aggregate options are set in a high gloss resin base to create a rich texture and natural look. Slip resistant and easy to clean, this troweled system elegantly draws the outdoors in.

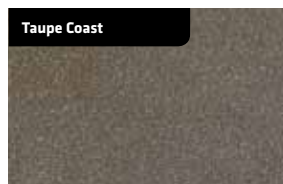




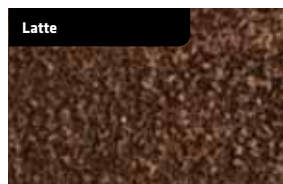
Rio Rancho



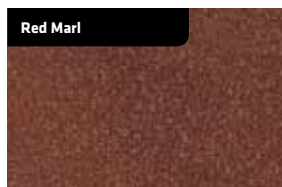
Pewter Gate



Taupe Coast



Latte



Red Marl



Spanish Woods



Gray Fox



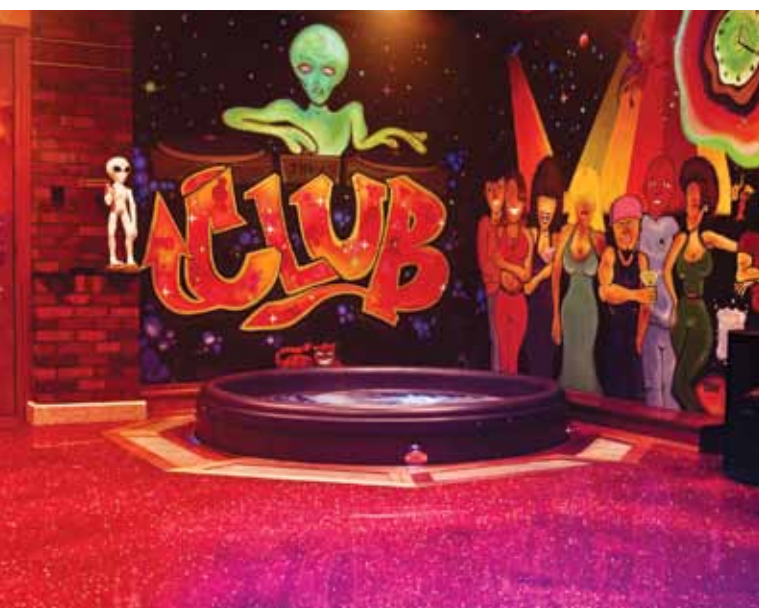
Raw Concrete

POLISHED // *vogue, sublime, dignified*

The urban look of concrete with a smart, contemporary, mottled look and a slightly textured surface. Polished rivals its competition in appearance and performance. It's earthy and intriguing colors are available in matte and gloss finishes.



**RUN WILD
WITH COLOR**



Brazen blues, molten golds, tart yellows, and toasty neutral combinations, **liquidelements** floors can be customized to create a one-of-a-kind floor for your project. Choose color, texture and finish for a unique and unforgettable floor.

SELECT YOUR RESIN	Rigid Epoxy	Resilient Epoxy	Aromatic Urethane	Aliphatic Urethane	Xtreme™
	●	●	●	●	●
Strong	●	●	●	●	●
Impact Resistant	●	●	●	●	●
Sound Dampening		●	●	●	●
Ergonomic		●	●	●	●
Scratch Resistant		●	●	●	●
Resistant to Organic Acids			●	●	●
Pigmented Only			●		
Color Stable				●	●
UV Resistant				●	●
Crystal Clear					●

All **liquidelements** floors are designed using high performance polymer resins, providing attractive, low-maintenance solutions for high-end commercial/retail environments. Several options are available and allow you to tailor your **liquidelements** floor to meet your specific needs.

Rigid Epoxy provides a smooth and durable finish that is stronger than traditional commercial flooring solutions. This low maintenance option offers improved stain resistance to food products and harsh cleaning chemicals, and is ideal for indoor areas not exposed to ultraviolet light.

Resilient Epoxy is as strong, durable, and chemical resistant as Rigid Epoxy, but adds an ergonomic surface that cushions your feet as you walk or stand upon it. This unique technology also absorbs sound and quiets surrounding areas making it ideal for public spaces.

Aromatic Urethane offers all of the benefits of resilient epoxy but is much more resistant to scratches and organic acids than Resilient Epoxy. This makes it an excellent solution for restaurants, bars and night clubs.

Aliphatic Urethane is your solution for pigmented systems that will be exposed to direct sunlight or where true white finishes are desired. It takes all of the benefits of the aromatic urethane and combines them with true color fastness that will not fade or yellow with the passage of time.

Xtreme is a state-of-the-art, next generation technology resin. This crystal clear resin will never yellow or discolor, even in direct sunlight. Xtreme's unique chemical formula makes it almost impervious to scratching from foot traffic. Ultraviolet light, which can cause lesser systems to yellow over time, has little to no effect on Xtreme. Xtreme is smooth, durable, low maintenance, and stain and organic acid resistant. Xtreme is your ultimate solution for longevity and will truly provide a walking surface that looks "brand new" for the life of the floor.



SUSTAINABILITY

At **liquidelements** we have an ethical responsibility to formulate floors that work not only with the environment, but help to reduce the carbon footprint of the built environment. As a manufacturer of interior flooring systems, we support the principles of green design by being environmentally responsible in all aspects of our manufacturing processes. As a member of the United States Green Building Council (USGBC) we are committed to helping you achieve LEED certification through the LEED rating system in the areas of Material & Resources and Indoor Environmental Quality. As the building industry focuses on transparency in building materials we have joined the HPD Collaborative to publish our data in HPDs. You may view them on line at www.liquidelements.com.









 **liquidelements™**
artfully poured floors™

1000 East Park Avenue
Maple Shade, NJ 08052

 877.642.7243
 856.321.7525

www.liquidelements.com

a brand of

 **THE
STONHARD
GROUP**

FLOORS FOR EVERY ENVIRONMENT

An  Company



©2014 Liquid Elements